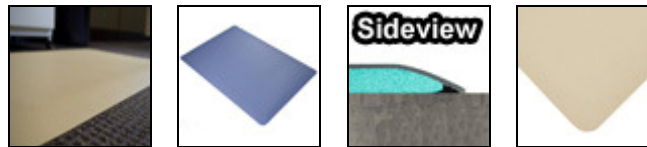


Soft Rock Anti-Fatigue Mats



Soft Rock Anti-Fatigue Mats' durable vinyl surface offers ultimate traction while still remaining easy to clean and maintain. The Soft Rock Mat's premium Nitricell cushion base greatly decreases fatigue and stress on the body when standing for long hours.

- Available 1/2" and 7/8" thick.
- Soft Rock Anti-Fatigue Mats can be customized into virtually any shape or size.
- An anti-bacterial compound is permanently embedded to both the surface and foam backing to kill microorganisms and thus helping to significantly reduce contamination.
- These fatigue mats are ideal for laboratories, pharmacies, retail counters and hotels.
- Environmental Green Rating: 35% Recycled Content.

Item No: FSFTRK

Standard Sizes (Approximate)

| Size | Qty. 1 | Qty. 2-10 | Qty. 11-25 | Qty. 26+ |
|-----------------------|----------|-----------|------------|----------|
| 1/2" Thick - 2' x 3' | \$63.40 | \$62.92 | \$62.28 | \$60.32 |
| 1/2" Thick - 2' x 4' | \$87.36 | \$86.06 | \$82.88 | \$80.96 |
| 1/2" Thick - 2' x 6' | \$131.04 | \$129.12 | \$124.32 | \$121.44 |
| 1/2" Thick - 2' x 8' | \$174.72 | \$172.16 | \$165.76 | \$161.92 |
| 1/2" Thick - 3' x 4' | \$131.04 | \$129.12 | \$124.32 | \$121.44 |
| 1/2" Thick - 3' x 5' | \$163.80 | \$161.40 | \$155.40 | \$151.80 |
| 1/2" Thick - 3' x 6' | \$196.56 | \$193.68 | \$186.48 | \$182.16 |
| 1/2" Thick - 3' x 8' | \$262.08 | \$258.24 | \$248.64 | \$242.88 |
| 1/2" Thick - 3' x 10' | \$327.60 | \$322.80 | \$310.80 | \$303.60 |
| 1/2" Thick - 3' x 12' | \$393.12 | \$387.36 | \$372.96 | \$364.32 |
| 1/2" Thick - 3' x 15' | \$491.40 | \$484.20 | \$466.20 | \$455.40 |
| 7/8" Thick - 2' x 3' | \$77.12 | \$75.44 | \$73.76 | \$73.28 |
| 7/8" Thick - 2' x 4' | \$116.16 | \$113.92 | \$111.68 | \$111.04 |
| 7/8" Thick - 2' x 6' | \$174.24 | \$170.88 | \$167.52 | \$166.56 |
| 7/8" Thick - 2' x 8' | \$232.32 | \$227.84 | \$223.36 | \$222.08 |
| 7/8" Thick - 3' x 4' | \$174.24 | \$170.88 | \$167.52 | \$166.56 |
| 7/8" Thick - 3' x 5' | \$194.40 | \$192.24 | \$189.88 | \$188.64 |
| 7/8" Thick - 3' x 6' | \$261.36 | \$256.32 | \$251.28 | \$249.84 |
| 7/8" Thick - 3' x 8' | \$348.48 | \$341.76 | \$335.04 | \$333.12 |
| 7/8" Thick - 3' x 10' | \$435.60 | \$427.20 | \$418.80 | \$416.40 |
| 7/8" Thick - 3' x 12' | \$522.72 | \$512.64 | \$502.56 | \$499.68 |
| 7/8" Thick - 3' x 15' | \$653.40 | \$640.80 | \$628.20 | \$624.60 |

Custom Sizes - Per Sq. Ft. (Approximate)

| Size | Qty. 1 | Qty. 2-10 | Qty. 11-25 | Qty. 26+ |
|----------------------|---------|-----------|------------|----------|
| 2' Wide - 1/2" Thick | \$10.92 | \$10.76 | \$10.36 | \$10.12 |
| 3' Wide - 1/2" Thick | \$10.92 | \$10.76 | \$10.36 | \$10.12 |
| 2' Wide - 7/8" Thick | \$14.52 | \$14.24 | \$13.96 | \$13.88 |
| 3' Wide - 7/8" Thick | \$14.52 | \$14.24 | \$13.96 | \$13.88 |

Call for Wider Sizes

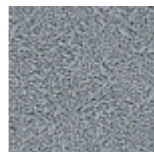
Standard Colors



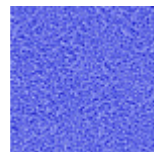
Black



Charcoal



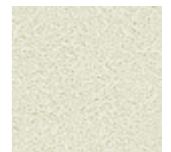
Grey



Blue



Tan



Cream